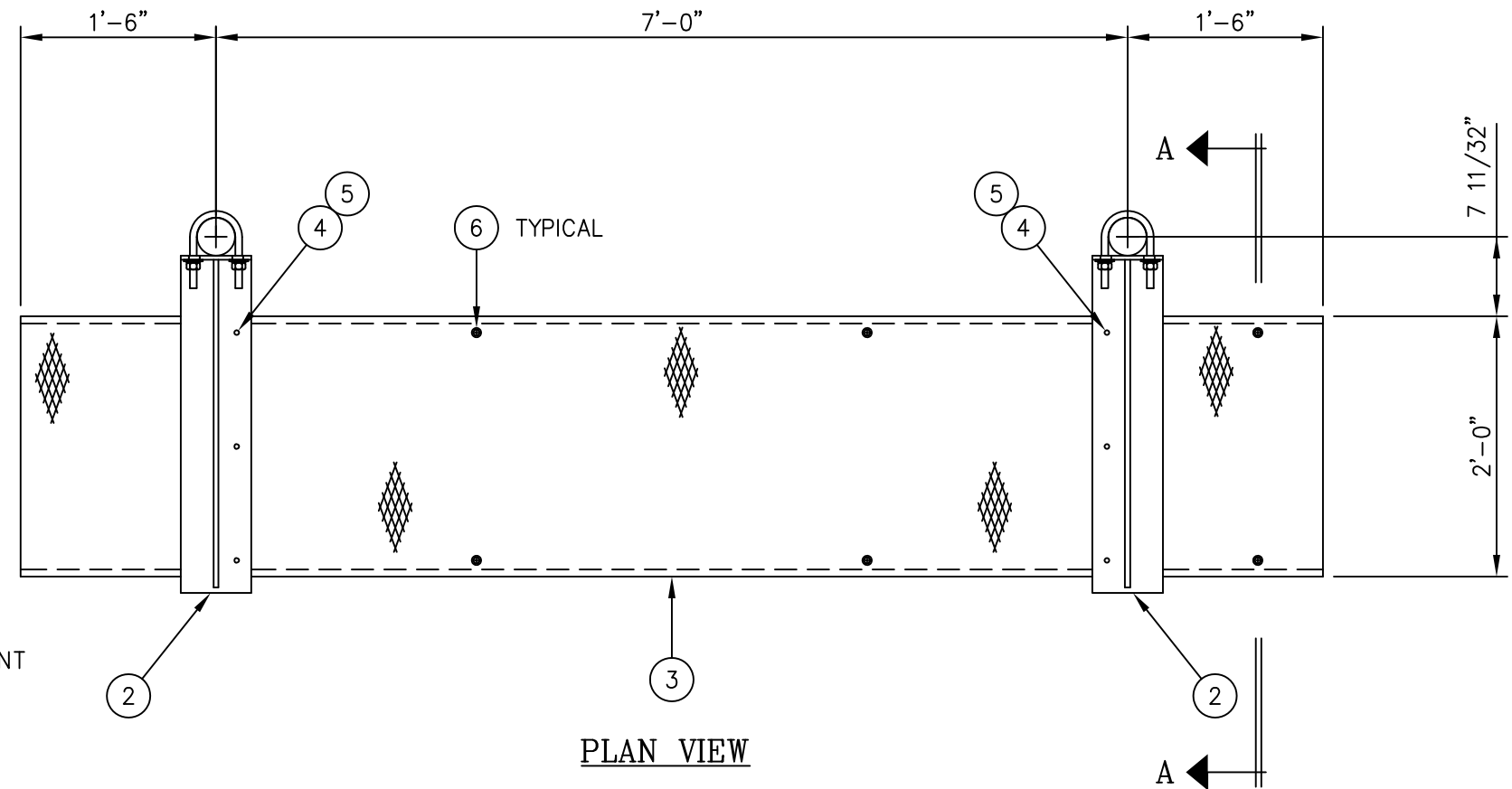
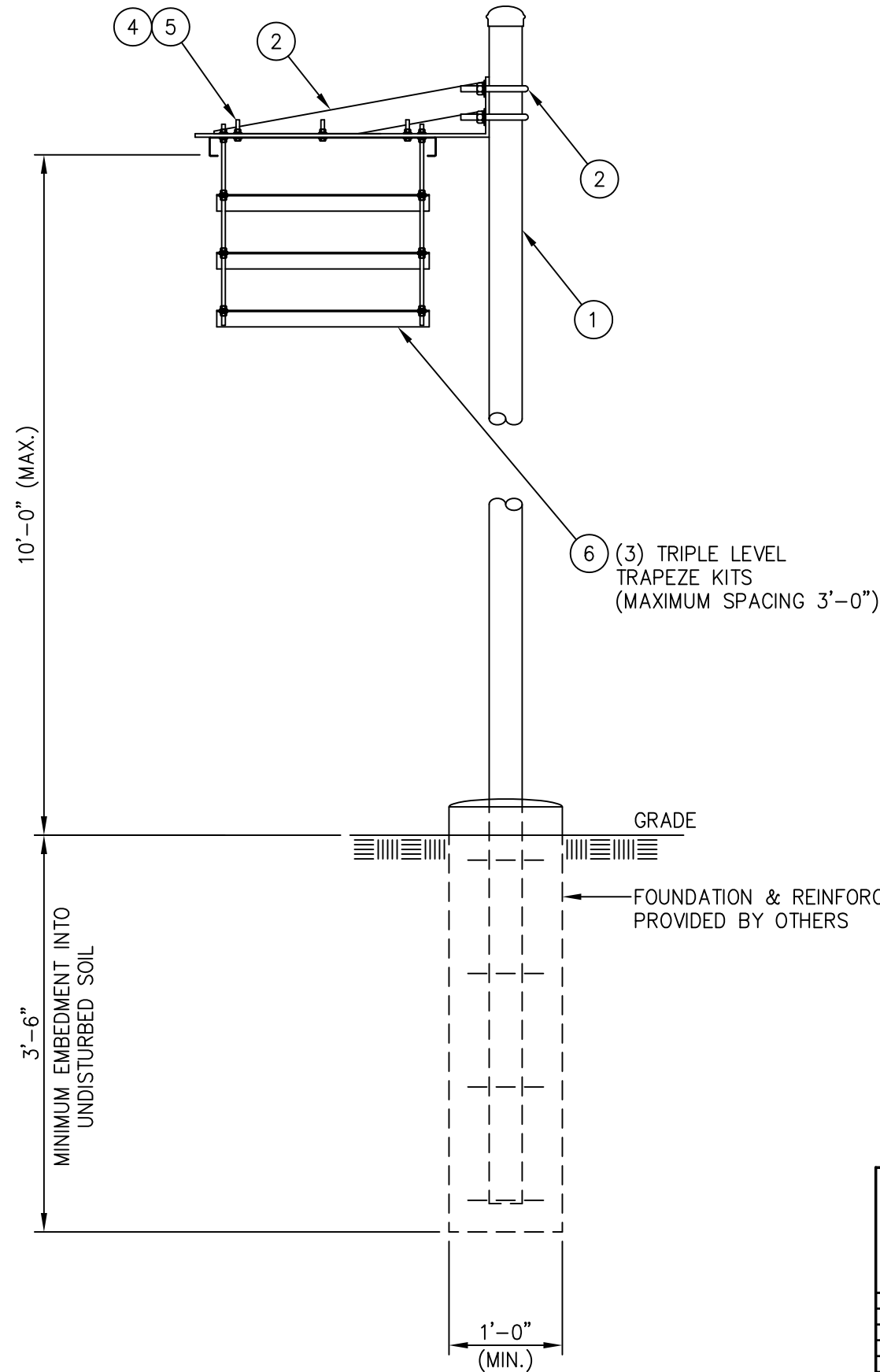




C20135061 GRIP STRUT WAVEGUIDE BRIDGE KIT

ITEM	QTY.	PART. NO.	DESCRIPTION	WEIGHT
1.	2	C20138004	PIPE, WAVEGUIDE BRIDGE POST W/PIPE CAP	197.0#
2.	2	C20140011	WAVEGUIDE BRIDGE SUPPORT ARM W/U-BOLTS	33.8#
3.	1	C20137002	GRIP STRUT WAVEGUIDE BRIDGE, 24" X 10'-0	74.0#
4.	6	C40012017	STAINLESS STEEL BOLT ASSY, 3/8 X 2	0.6#
5.	12	C40046001	FENDER WASHER, 7/16 I.D. X 1 1/2 O.D.	0.6#
6.	3	C20145006	TRIPLE LEVEL TRAPEZE KIT	42.9#
TOTAL WEIGHT				348.9#



**NOTE:**

THIS WAVEGUIDE BRIDGE ASSEMBLY IS NOT DESIGNED TO SUPPORT PERSONNEL OR EQUIPMENT.

UNLESS OTHERWISE SPECIFIED  
ALL DIMENSIONS INCLUDE  
FINISHES AND ARE IN INCHES

TOLERANCES: FRACTIONS ± 1/16"  
ANGLES ± 1/2 DEG.  
DECIMALS ± .010"

MATERIAL:

TOLERANCES DO NOT APPLY  
TO RAW MATERIAL



GRIP STRUT WAVEGUIDE BRIDGE  
WITH 15'-4" PIPE COLUMNS  
(24" WIDE X 10'-0")  
TRIPLE LEVEL TRAPEZE

REV	DATE	DRW	CHK	DESCRIPTION
2	1/14/09	MLC	MC	REVISED WEIGHT OF ITEM 1
1	4/9/03	CE	PSB	UPDATED DWG & MOVED MAT'L LIST

**CONFIDENTIAL**

This document and the information contained herein is the confidential trade secret property of Sabre Communications Corporation ("Sabre") and must not be reproduced, copied or used, in whole or in part, for any purpose without the prior written consent of Sabre.

© 2014 Sabre Communications Corporation. All rights reserved.

DATE	8/19/02	SIZE	B	DRAWING NO.	C20135061	REV	2
DRAWN BY	CHH	CHECKED BY	RSL	SCALE	None	PAGE	1 OF 1

SECTION A-A

PLAN VIEW