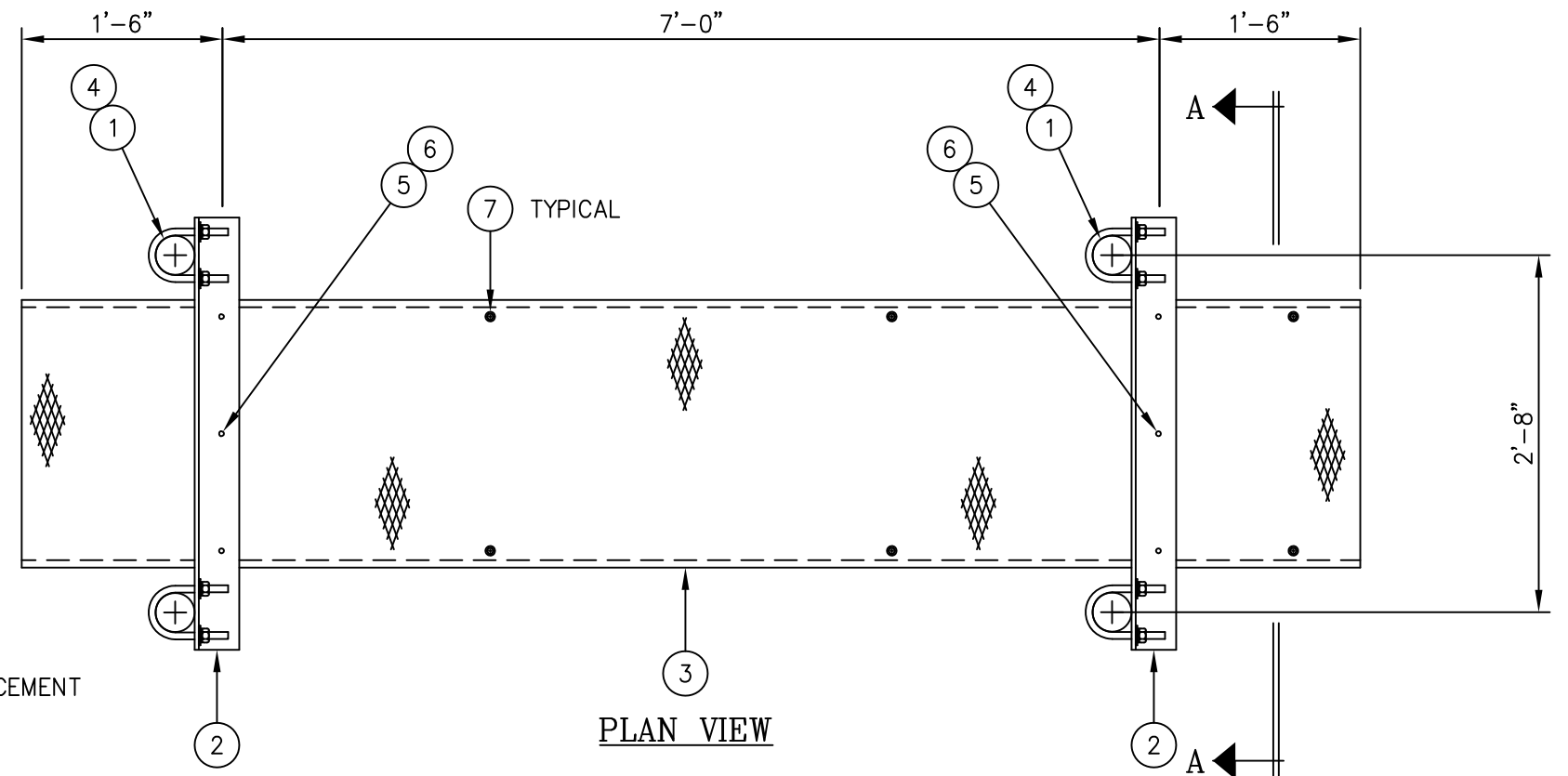
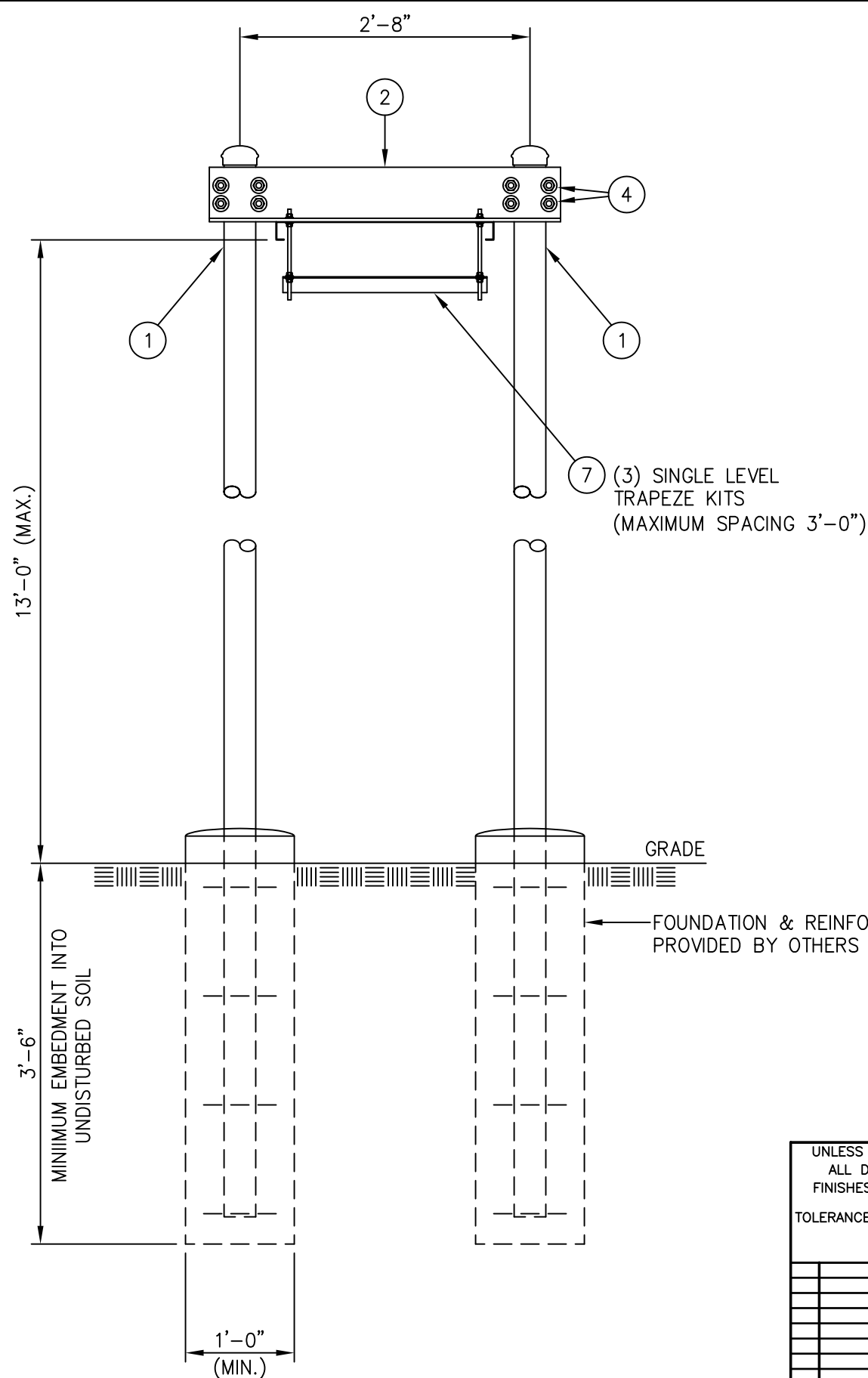




C20135006 GRIP STRUT WAVEGUIDE BRIDGE KIT

ITEM	QTY.	PART. NO.	DESCRIPTION	WEIGHT
1.	4	C20138001	PIPE, WAVEGUIDE BRIDGE POST W/PIPE CAP	462.0#
2.	2	CS00053	WAVEGUIDE BRIDGE SUPPORT ANGLE	82.6#
3.	1	C20137002	GRIP STRUT WAVEGUIDE BRIDGE, 24" X 10'-0	74.0#
4.	8	C40034028	U-BOLT ASSEMBLY, 5/8"Ø X 4 3/16" C/C	15.4#
5.	6	C40012017	STAINLESS STEEL BOLT ASSY, 3/8 X 2	0.6#
6.	12	C40046001	FENDER WASHER, 7/16 I.D. X 1 1/2 O.D.	0.6#
7.	3	C20145002	SINGLE LEVEL TRAPEZE KIT	15.3#
TOTAL WEIGHT				650.5#



NOTE:

THIS WAVEGUIDE BRIDGE ASSEMBLY IS NOT DESIGNED TO SUPPORT PERSONNEL OR EQUIPMENT.

UNLESS OTHERWISE SPECIFIED ALL DIMENSIONS INCLUDE FINISHES AND ARE IN INCHES

TOLERANCES: FRACTIONS ± 1/16"
 ANGLES ± 1/2 DEG.
 DECIMALS ± .010"

MATERIAL:

TOLERANCES DO NOT APPLY TO RAW MATERIAL



GRIP STRUT WAVEGUIDE BRIDGE WITH 18'-0" PIPE COLUMNS (24" WIDE X 10'-0") SINGLE LEVEL TRAPEZE

REV	DATE	DRW	CHK	DESCRIPTION
1	1/14/09	MLC	MC	REVISED WEIGHT OF ITEM 1

CONFIDENTIAL

This document and the information contained herein is the confidential trade secret property of Sabre Communications Corporation ("Sabre") and must not be reproduced, copied or used, in whole or in part, for any purpose without the prior written consent of Sabre.

© 2014 Sabre Communications Corporation. All rights reserved.

DATE	6/3/03	SIZE	B	DRAWING NO.	C20135006	REV	1
DRAWN BY	KLE	SCALE	None	PAGE	1 OF 1		
CHECKED BY	PSB						