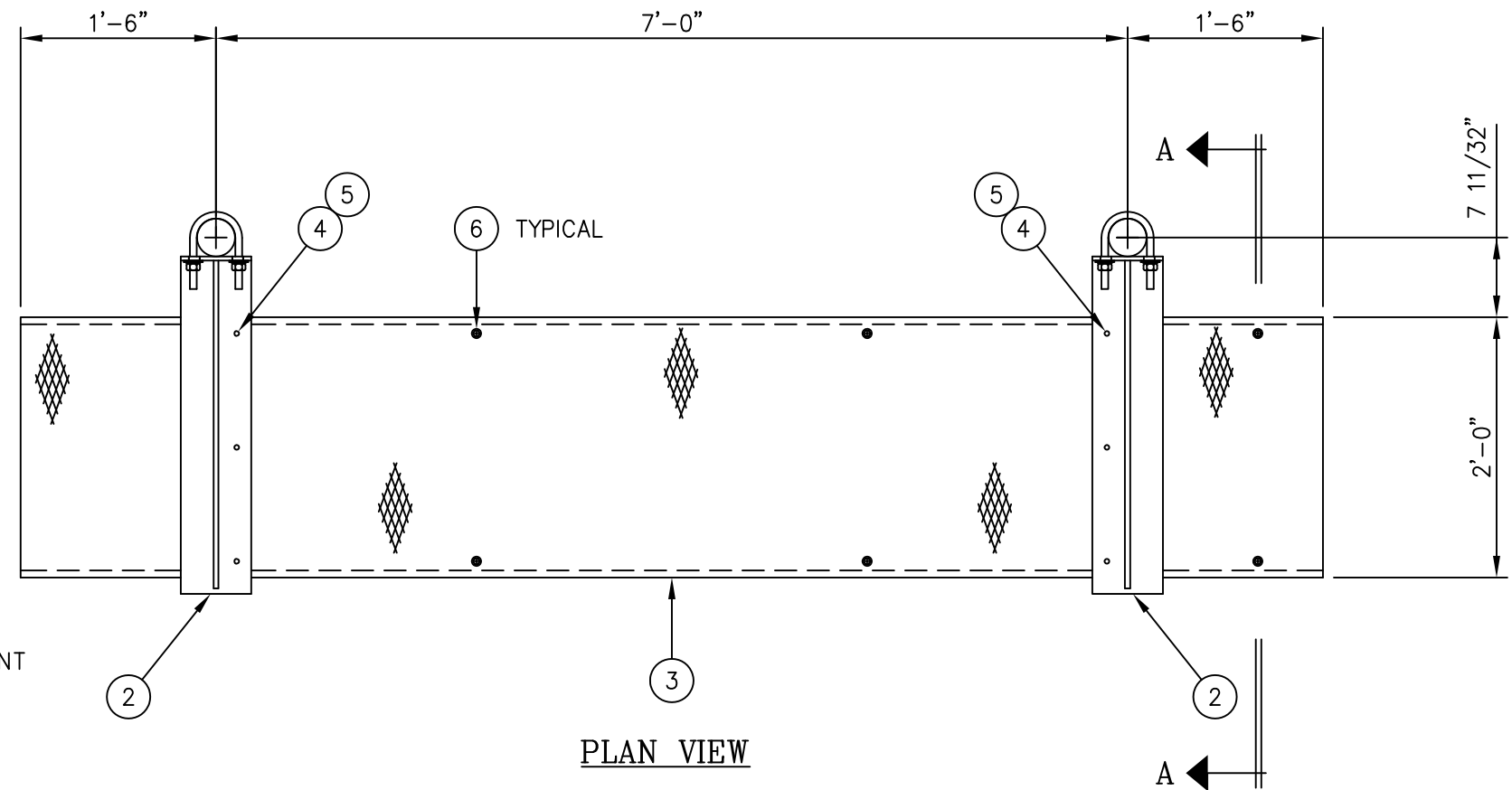
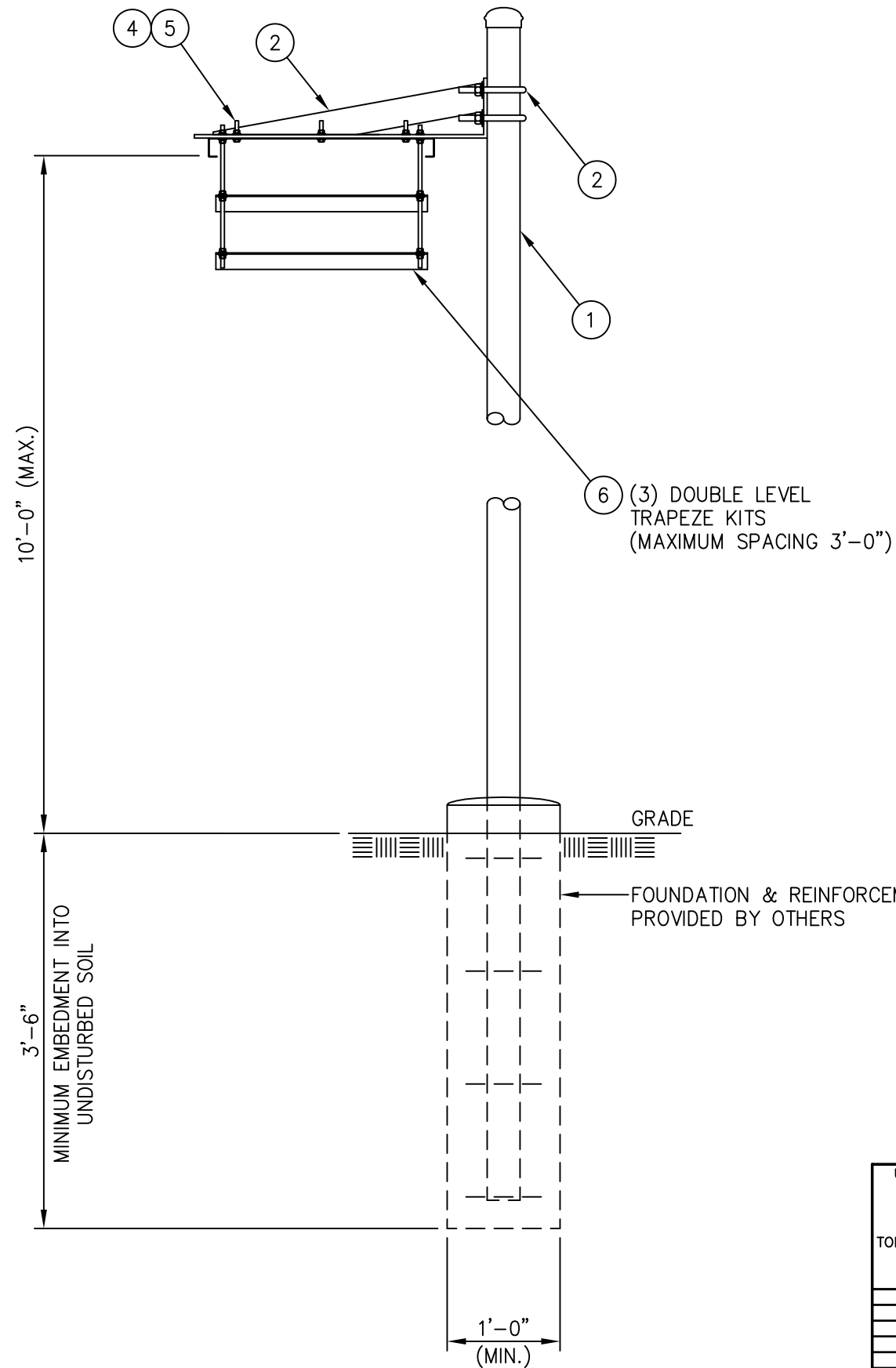




C20135058 GRIP STRUT WAVEGUIDE BRIDGE KIT

ITEM	QTY.	PART. NO.	DESCRIPTION	WEIGHT
1.	2	C20138004	PIPE, WAVEGUIDE BRIDGE POST W/PIPE CAP	197.0#
2.	2	C20140011	WAVEGUIDE BRIDGE SUPPORT ARM W/U-BOLTS	33.8#
3.	1	C20137002	GRIP STRUT WAVEGUIDE BRIDGE, 24" X 10'-0"	74.0#
4.	6	C40012017	STAINLESS STEEL BOLT ASSY, 3/8 X 2	0.6#
5.	12	C40046001	FENDER WASHER, 7/16 I.D. X 1 1/2 O.D.	0.6#
6.	3	C20145004	DOUBLE LEVEL TRAPEZE KIT	30.3#
TOTAL WEIGHT				336.3#



NOTE:

THIS WAVEGUIDE BRIDGE ASSEMBLY IS NOT DESIGNED TO SUPPORT PERSONNEL OR EQUIPMENT.

SECTION A-A



GRIP STRUT WAVEGUIDE BRIDGE
WITH 15'-4" PIPE COLUMNS
(24" WIDE X 10'-0")
DOUBLE LEVEL TRAPEZE

UNLESS OTHERWISE SPECIFIED ALL DIMENSIONS INCLUDE FINISHES AND ARE IN INCHES		MATERIAL:	
TOLERANCES: FRACTIONS ± 1/16" ANGLES ± 1/2 DEG. DECIMALS ± .010"		TOLERANCES DO NOT APPLY TO RAW MATERIAL	
2	1/14/09	MLC MC	REVISED WEIGHT OF ITEM 1
1	4/9/03	CE PSB	UPDATED DWG & MOVED MAT'L LIST
REV	DATE	DRW/CHK	DESCRIPTION

CONFIDENTIAL
This document and the information contained herein is the confidential trade secret property of Sabre Communications Corporation ("Sabre") and must not be reproduced, copied or used, in whole or in part, for any purpose without the prior written consent of Sabre.
© 2014 Sabre Communications Corporation. All rights reserved.

DATE	8/19/02	SIZE	B	DRAWING NO.	C20135058	REV	2
DRAWN BY	CHH			SCALE	None	PAGE	1 OF 1
CHECKED BY	RSL						