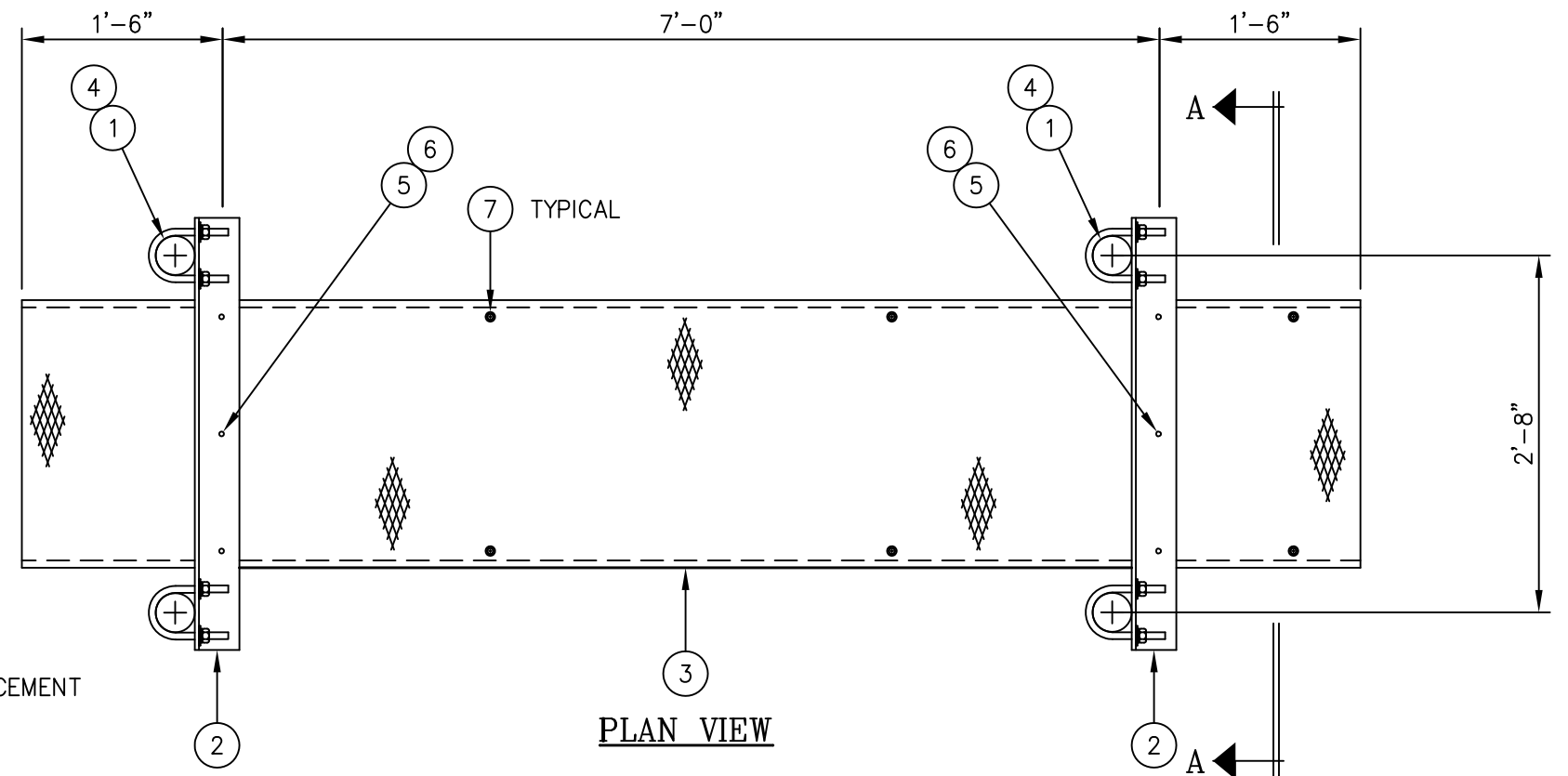
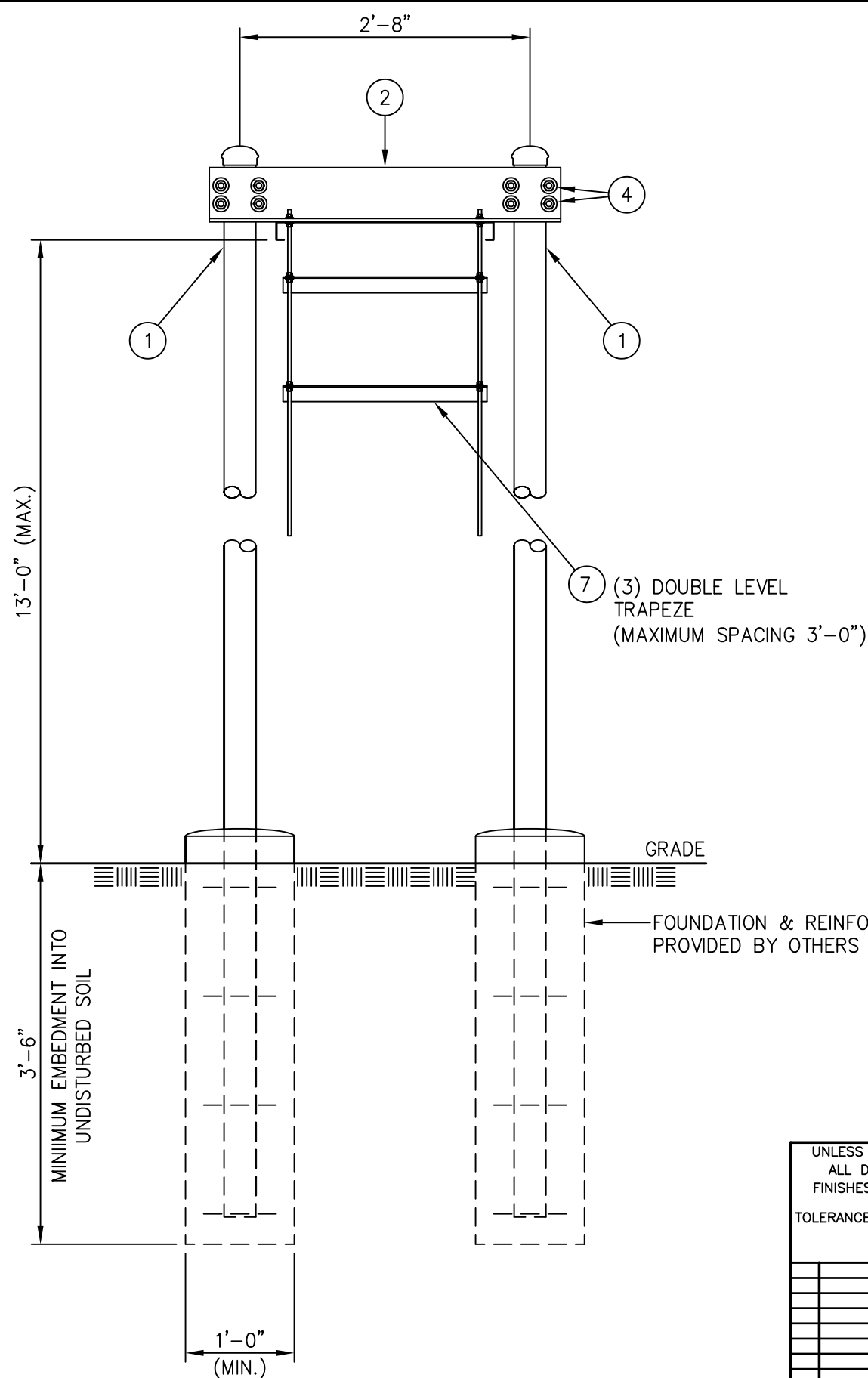




C20135009 GRIP STRUT WAVEGUIDE BRIDGE KIT

ITEM	QTY.	PART. NO.	DESCRIPTION	WEIGHT
1.	4	C20138001	PIPE, WAVEGUIDE BRIDGE POST W/PIPE CAP	462.0#
2.	2	CS00053	WAVEGUIDE BRIDGE SUPPORT ANGLE	82.6#
3.	1	C20137002	GRIP STRUT WAVEGUIDE BRIDGE, 24" X 10'-0	74.0#
4.	8	C40034028	U-BOLT ASSEMBLY, 5/8"Ø X 4 3/16" C/C	15.4#
5.	6	C40012017	STAINLESS STEEL BOLT ASSY, 3/8 X 2	0.6#
6.	12	C40046001	FENDER WASHER, 7/16 I.D. X 1 1/2 O.D.	0.6#
7.	3	C20145004	DOUBLE LEVEL TRAPEZE KIT	30.3#
TOTAL WEIGHT				665.5#



NOTE:
THIS WAVEGUIDE BRIDGE ASSEMBLY IS NOT DESIGNED TO SUPPORT PERSONNEL OR EQUIPMENT.

UNLESS OTHERWISE SPECIFIED ALL DIMENSIONS INCLUDE FINISHES AND ARE IN INCHES		MATERIAL:	
TOLERANCES: FRACTIONS ± 1/16" ANGLES ± 1/2 DEG. DECIMALS ± .010"		TOLERANCES DO NOT APPLY TO RAW MATERIAL	
1	1/14/09	MLC MC	REVISED WEIGHT OF ITEM 1
REV	DATE	DRW	CHK
			DESCRIPTION

Sabre Industries
Towers and Poles

CONFIDENTIAL

This document and the information contained herein is the confidential trade secret property of Sabre Communications Corporation ("Sabre") and must not be reproduced, copied or used, in whole or in part, for any purpose without the prior written consent of Sabre.
© 2014 Sabre Communications Corporation. All rights reserved.

GRIP STRUT WAVEGUIDE BRIDGE WITH 18'-0" PIPE COLUMNS (24" WIDE X 10'-0") DOUBLE LEVEL TRAPEZE			
DATE	6/3/03	SIZE	B
DRAWN BY	KLE	DRAWING NO.	C20135009
CHECKED BY	PSB	SCALE	None
		PAGE	1 OF 1

SECTION A-A