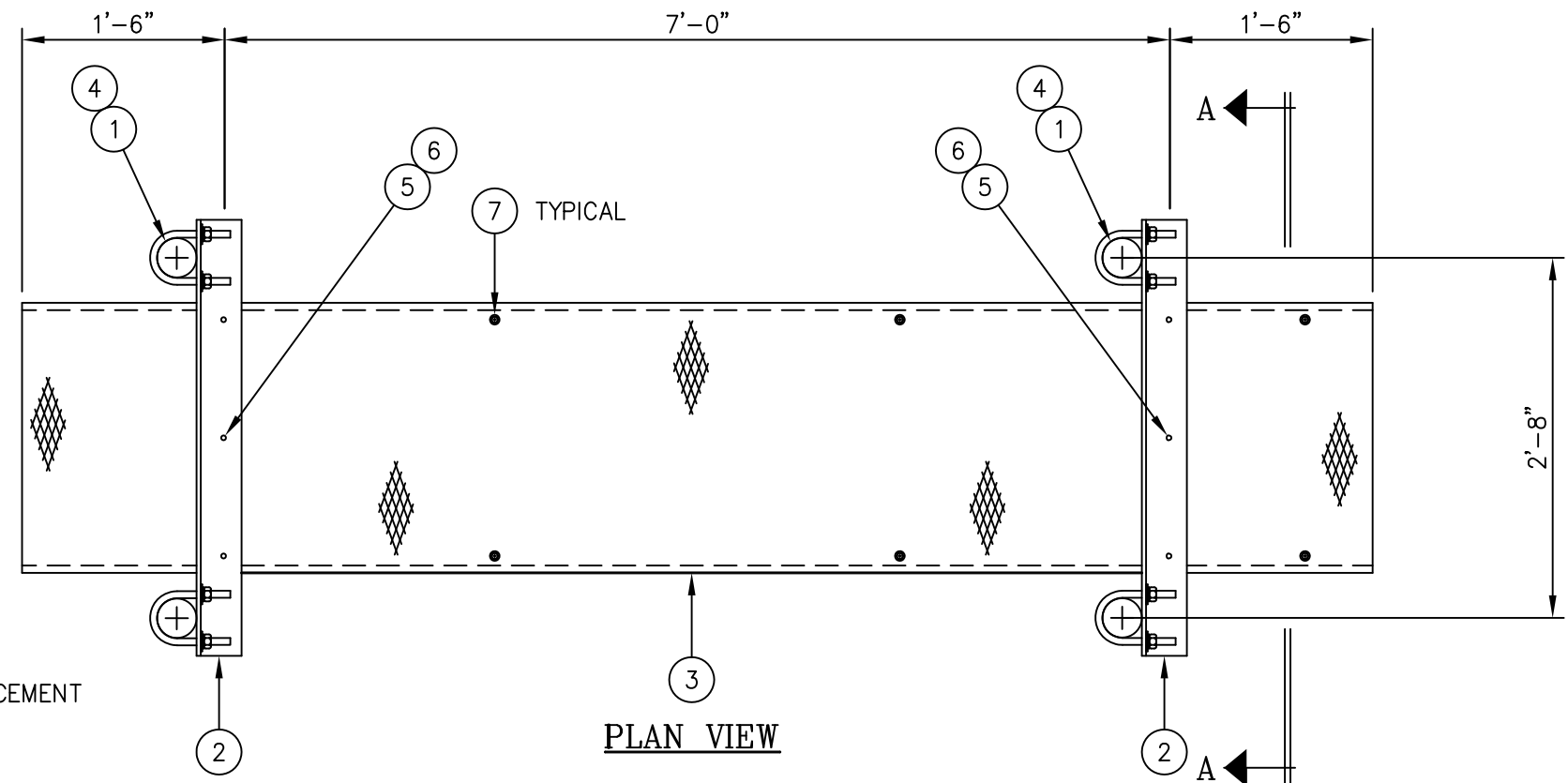
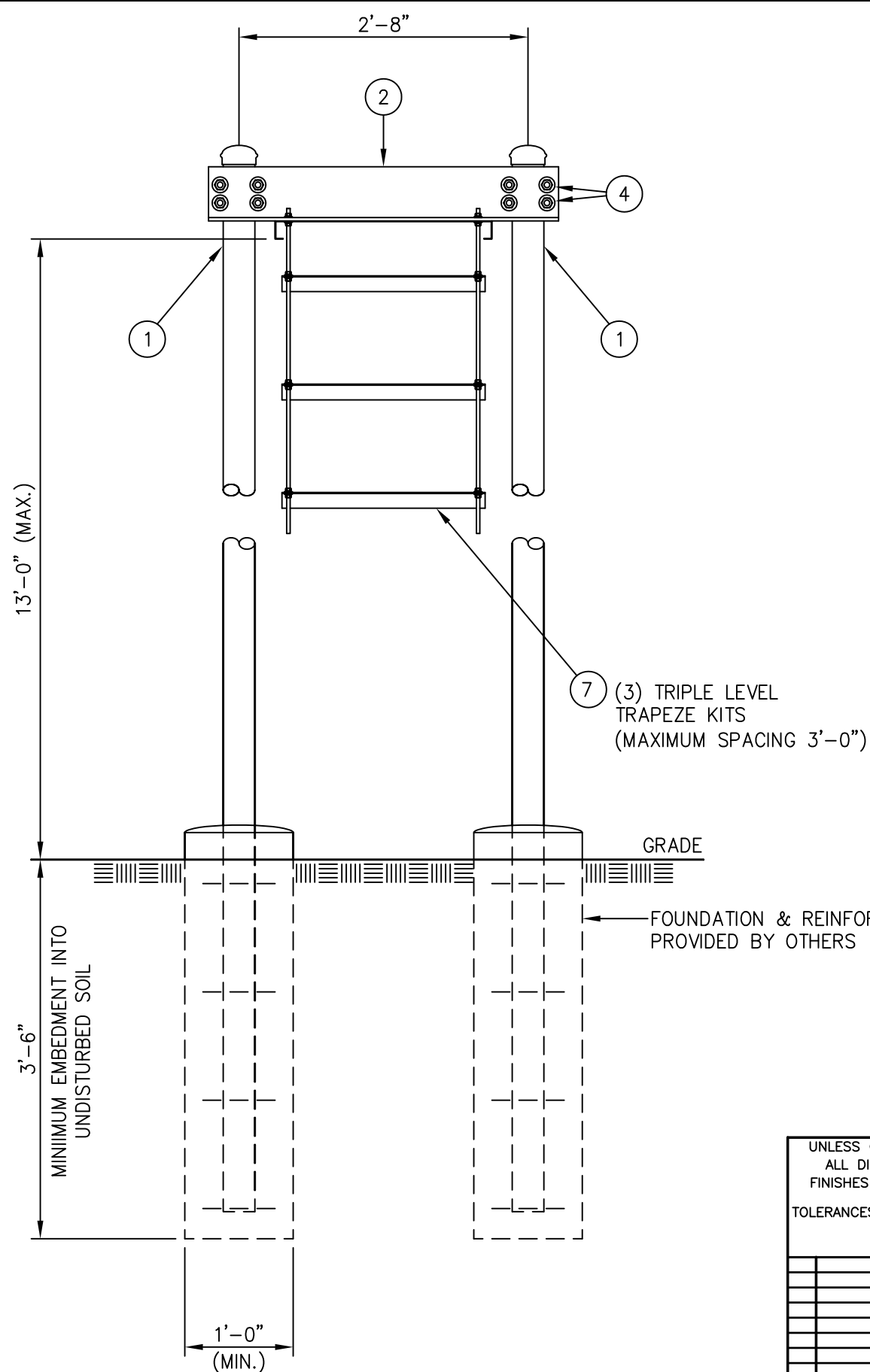




C20135012 GRIP STRUT WAVEGUIDE BRIDGE KIT

ITEM	QTY.	PART. NO.	DESCRIPTION	WEIGHT
1.	4	C20138001	PIPE, WAVEGUIDE BRIDGE POST W/PIPE CAP	462.0#
2.	2	CS00053	WAVEGUIDE BRIDGE SUPPORT ANGLE	82.6#
3.	1	C20137002	GRIP STRUT WAVEGUIDE BRIDGE, 24" X 10'-0	74.0#
4.	8	C40034028	U-BOLT ASSEMBLY, 5/8"Ø X 4 3/16" C/C	15.4#
5.	6	C40012017	STAINLESS STEEL BOLT ASSY, 3/8 X 2	0.6#
6.	12	C40046001	FENDER WASHER, 7/16 I.D. X 1 1/2 O.D.	0.6#
7.	3	C20145006	TRIPLE LEVEL TRAPEZE KIT	42.9#
TOTAL WEIGHT				678.1#



NOTE:
THIS WAVEGUIDE BRIDGE ASSEMBLY IS NOT DESIGNED TO SUPPORT PERSONNEL OR EQUIPMENT.

UNLESS OTHERWISE SPECIFIED ALL DIMENSIONS INCLUDE FINISHES AND ARE IN INCHES		MATERIAL:	
TOLERANCES: FRACTIONS ± 1/16" ANGLES ± 1/2 DEG. DECIMALS ± .010"		TOLERANCES DO NOT APPLY TO RAW MATERIAL	
1	1/14/09	MLC MC	REVISED WEIGHT OF ITEM 1
REV	DATE	DRW/CHK	DESCRIPTION

CONFIDENTIAL
This document and the information contained herein is the confidential trade secret property of Sabre Communications Corporation ("Sabre") and must not be reproduced, copied or used, in whole or in part, for any purpose without the prior written consent of Sabre.
© 2006 Sabre Communications Corporation. All rights reserved.

GRIP STRUT WAVEGUIDE BRIDGE WITH 18'-0" PIPE COLUMNS (24" WIDE X 10'-0") TRIPLE LEVEL TRAPEZE			
DATE	6/3/03	SIZE	B
DRAWN BY	KLE	DRAWING NO.	C20135012
CHECKED BY	PSB	SCALE	None
		REV	1
		PAGE	1 OF 1