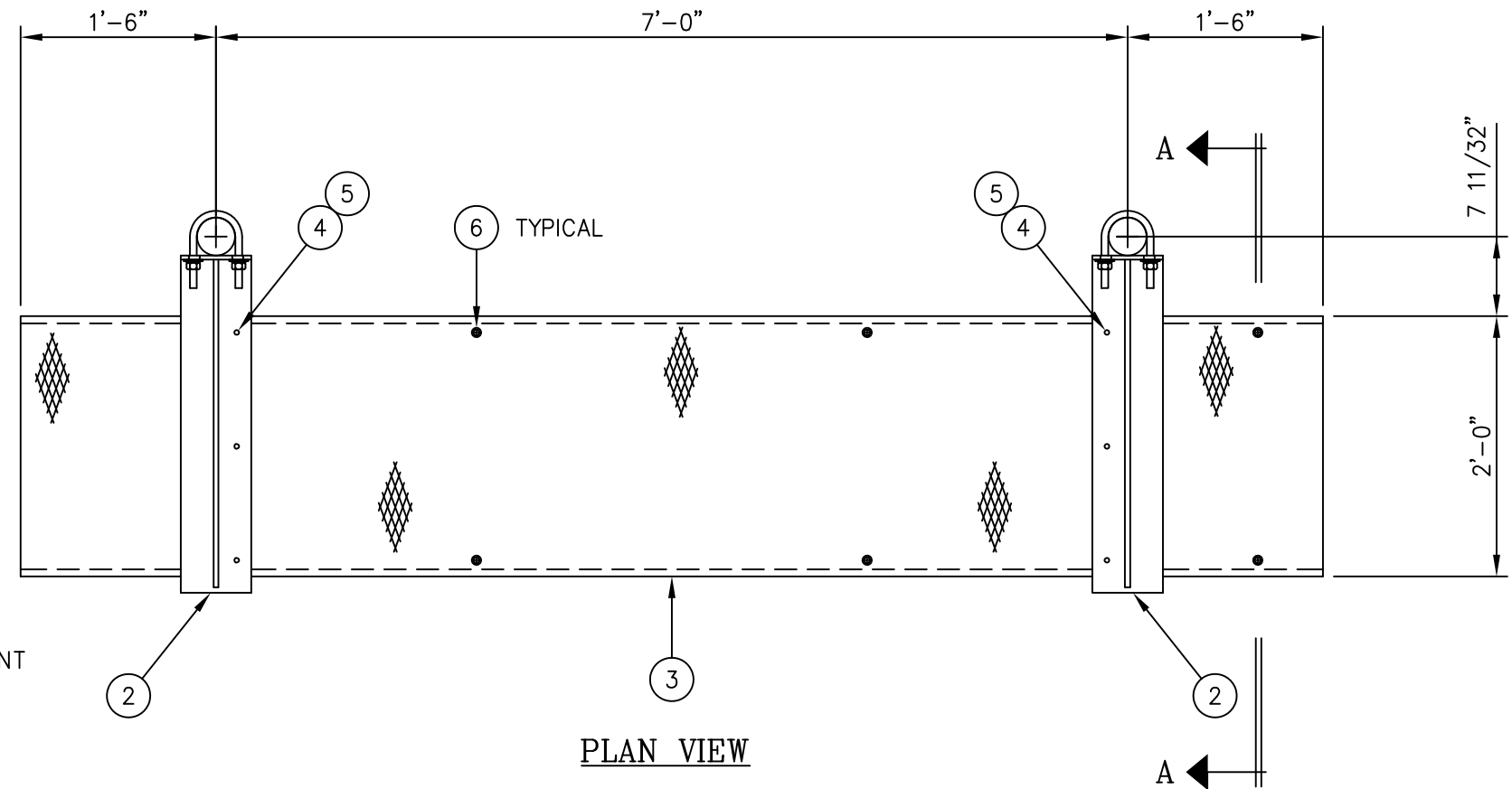
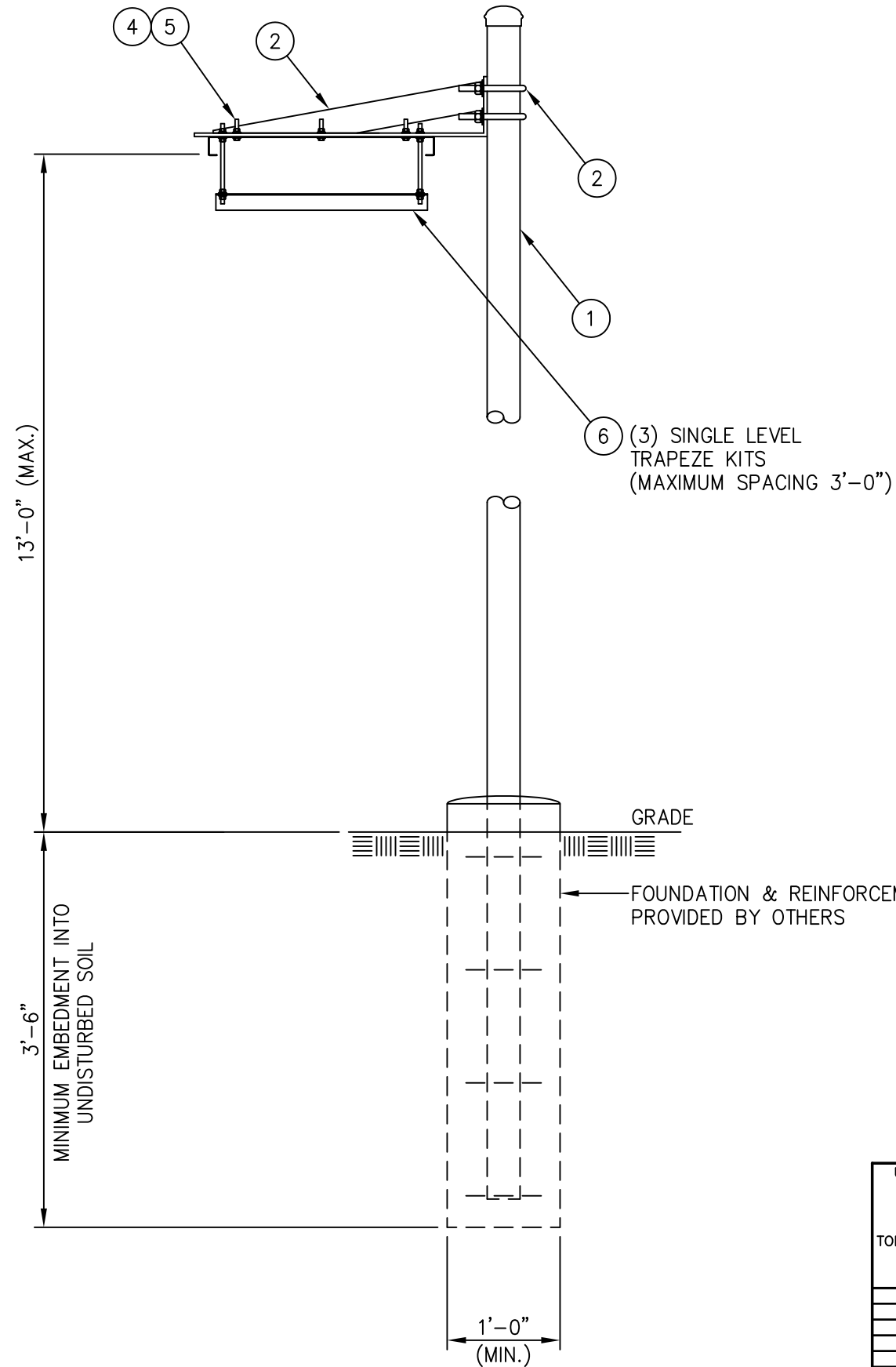




C20135005 GRIP STRUT WAVEGUIDE BRIDGE KIT

ITEM	QTY.	PART. NO.	DESCRIPTION	WEIGHT
1.	2	C20138001	PIPE, WAVEGUIDE BRIDGE POST W/PIPE CAP	231.0#
2.	2	C20140011	WAVEGUIDE BRIDGE SUPPORT ARM W/U-BOLTS	33.8#
3.	1	C20137002	GRIP STRUT WAVEGUIDE BRIDGE, 24" X 10'-0	74.0#
4.	6	C40012017	STAINLESS STEEL BOLT ASSY, 3/8 X 2	0.6#
5.	12	C40046001	FENDER WASHER, 7/16 I.D. X 1 1/2 O.D.	0.6#
6.	3	C20145002	SINGLE LEVEL TRAPEZE KIT	15.3#
TOTAL WEIGHT				355.3#



NOTE:

THIS WAVEGUIDE BRIDGE ASSEMBLY IS NOT DESIGNED TO SUPPORT PERSONNEL OR EQUIPMENT.

UNLESS OTHERWISE SPECIFIED
ALL DIMENSIONS INCLUDE
FINISHES AND ARE IN INCHES
TOLERANCES: FRACTIONS ± 1/16"
ANGLES ± 1/2 DEG.
DECIMALS ± .010"

MATERIAL:
TOLERANCES DO NOT APPLY
TO RAW MATERIAL



GRIP STRUT WAVEGUIDE BRIDGE
WITH 18'-0" PIPE COLUMNS
(24" WIDE X 10'-0")
SINGLE LEVEL TRAPEZE

REV	DATE	DRWCHK	DESCRIPTION
2	1/14/09	MLC MC	REVISED WEIGHT OF ITEM 1
1	4/9/03	CE PSB	UPDATED DWG & MOVED MAT'L LIST

CONFIDENTIAL
This document and the information contained herein is the confidential trade secret property of Sabre Communications Corporation ("Sabre") and must not be reproduced, copied or used, in whole or in part, for any purpose without the prior written consent of Sabre.
© 2014 Sabre Communications Corporation. All rights reserved.

DATE	8/19/02	SIZE	DRAWING NO.	REV
DRAWN BY	CHH	B	C20135005	2
CHECKED BY	RSL	SCALE	None	PAGE
				1 OF 1

SECTION A-A