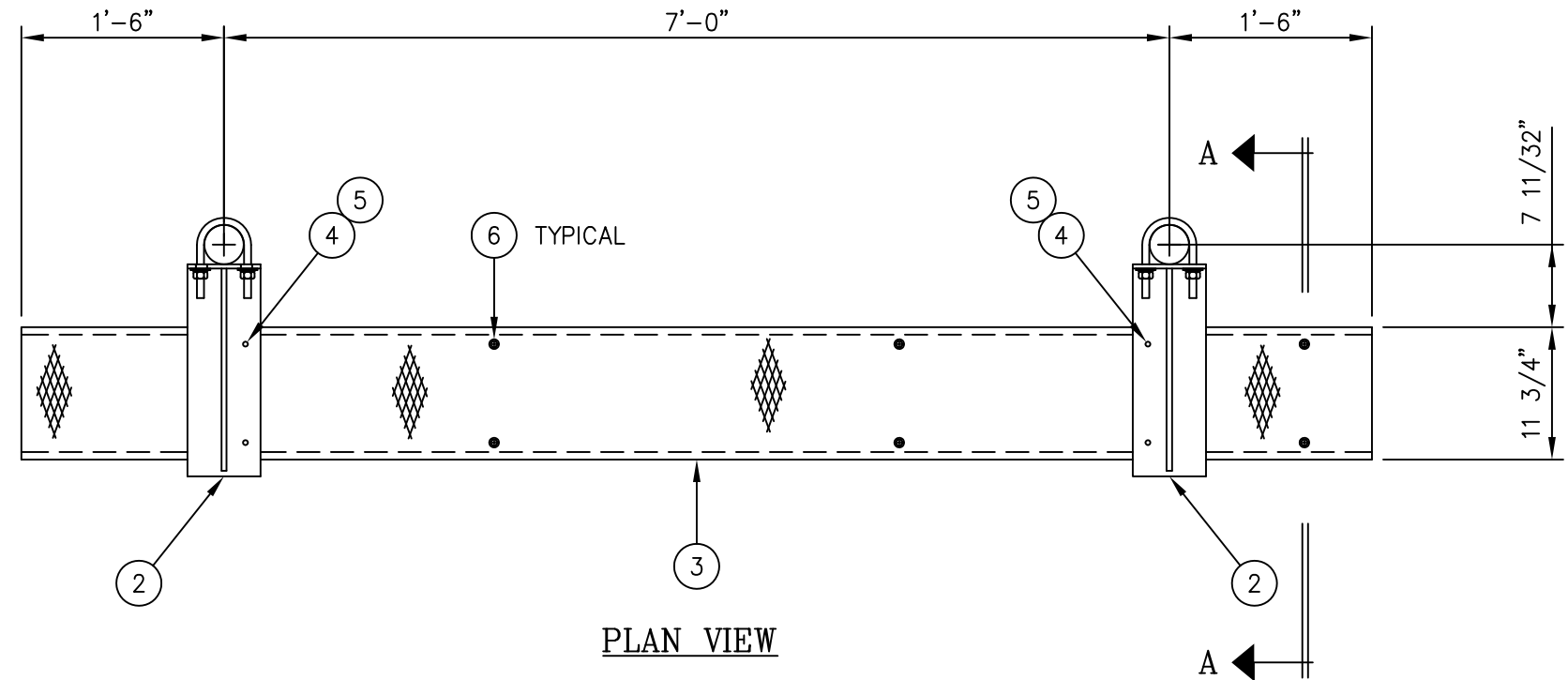
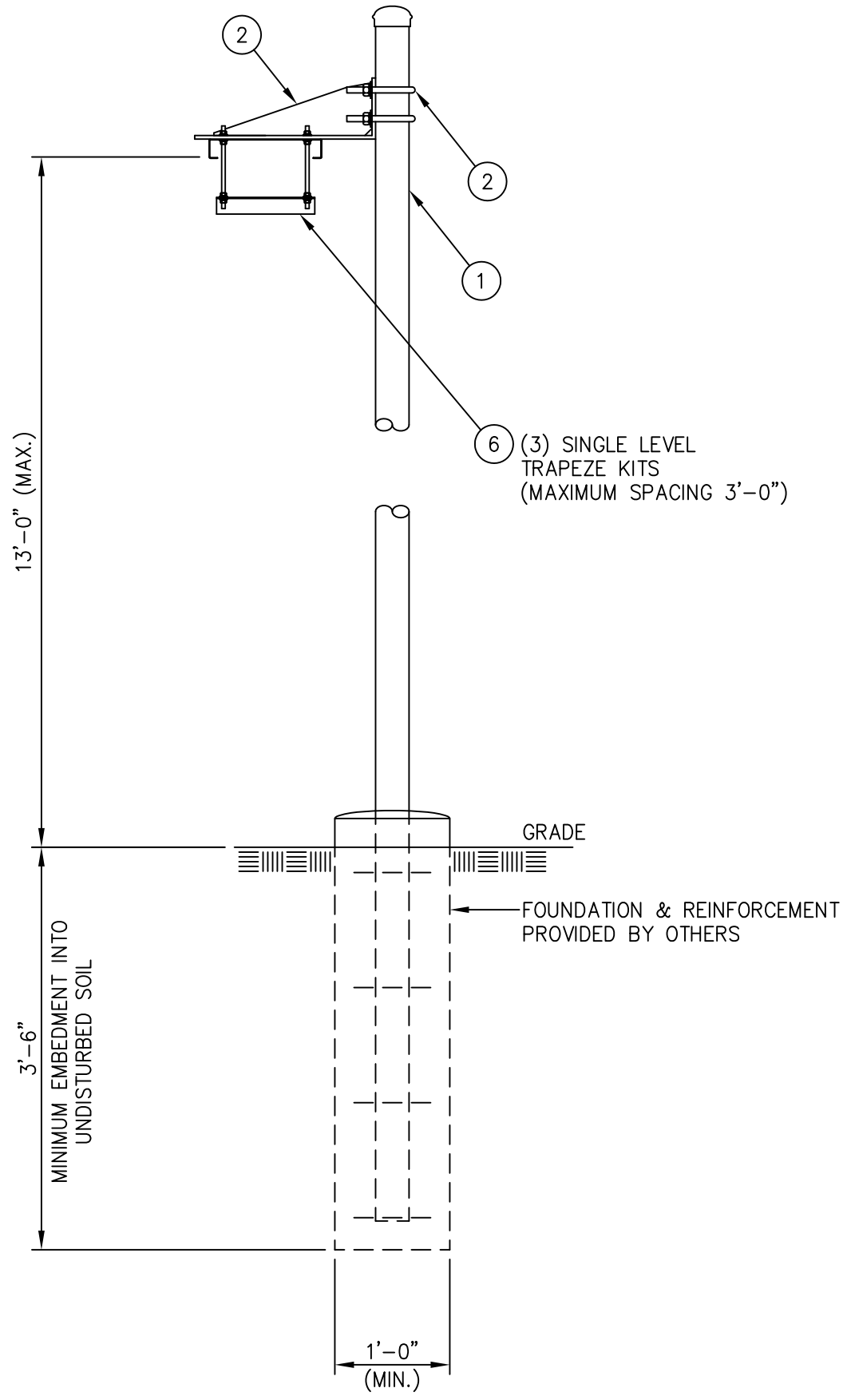




C20135004 GRIP STRUT WAVEGUIDE BRIDGE KIT

ITEM	QTY.	PART. NO.	DESCRIPTION	WEIGHT
1.	2	C20138001	PIPE, WAVEGUIDE BRIDGE POST W/PIPE CAP	231.0#
2.	2	C20140010	WAVEGUIDE BRIDGE SUPPORT ARM W/U-BOLTS	20.8#
3.	1	C20137001	GRIP STRUT WAVEGUIDE BRIDGE, 11 3/4" X 10'-0"	44.0#
4.	4	C40012017	STAINLESS STEEL BOLT ASSY, 3/8 X 2	0.4#
5.	8	C40046001	FENDER WASHER, 7/16 I.D. X 1 1/2 O.D.	0.4#
6.	3	C20145001	SINGLE LEVEL TRAPEZE KIT	9.0#
TOTAL WEIGHT				305.6#



NOTE:

THIS WAVEGUIDE BRIDGE ASSEMBLY IS NOT DESIGNED TO SUPPORT PERSONNEL OR EQUIPMENT.

UNLESS OTHERWISE SPECIFIED ALL DIMENSIONS INCLUDE FINISHES AND ARE IN INCHES		MATERIAL:	
TOLERANCES: FRACTIONS ± 1/16" ANGLES ± 1/2 DEG. DECIMALS ± .010"		TOLERANCES DO NOT APPLY TO RAW MATERIAL	
1	1/14/09	MLC MC	REVISED WEIGHT OF ITEM 1
REV	DATE	DRWCHK	DESCRIPTION



CONFIDENTIAL
This document and the information contained herein is the confidential trade secret property of Sabre Communications Corporation ("Sabre") and must not be reproduced, copied or used, in whole or in part, for any purpose without the prior written consent of Sabre.
© 2014 Sabre Communications Corporation. All rights reserved.

GRIP STRUT WAVEGUIDE BRIDGE WITH 18'-0" PIPE COLUMNS (11 3/4" WIDE X 10'-0") SINGLE LEVEL TRAPEZE

DATE	4/8/03	SIZE	B	DRAWING NO.	C20135004	REV	1
DRAWN BY	CE			SCALE	None	PAGE	1 OF 1
CHECKED BY	PSB						