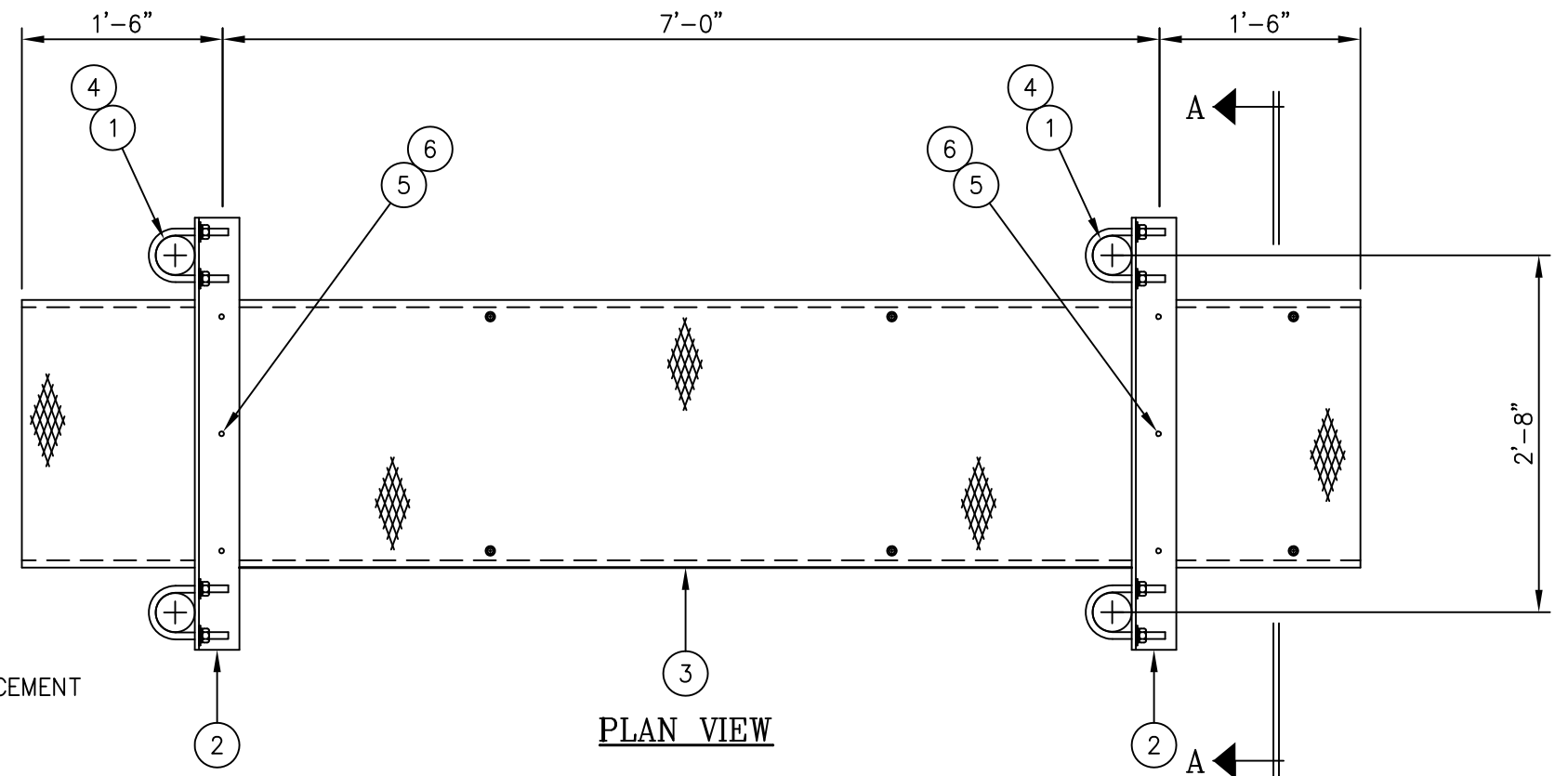
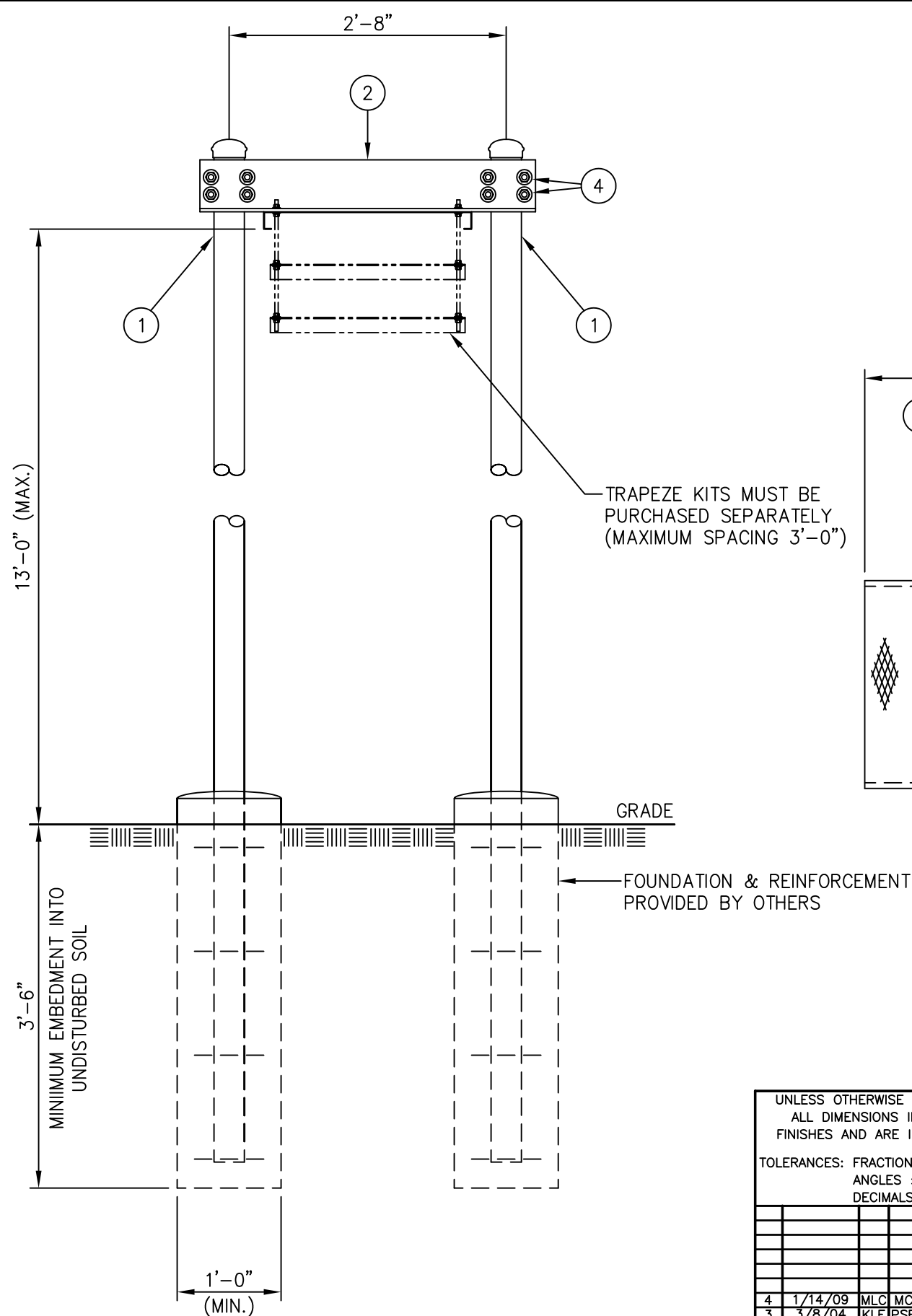




C20135003 GRIP STRUT WAVEGUIDE BRIDGE KIT

ITEM	QTY.	PART. NO.	DESCRIPTION	WEIGHT
1.	4	C20138001	PIPE, WAVEGUIDE BRIDGE POST W/PIPE CAP	462.0#
2.	2	CS00053	WAVEGUIDE BRIDGE SUPPORT ANGLE	82.6#
3.	1	C20137002	GRIP STRUT WAVEGUIDE BRIDGE, 24" X 10'-0	74.0#
4.	8	C40034028	U-BOLT ASSEMBLY, 5/8"Ø X 4 3/16" C/C	15.4#
5.	6	C40012017	STAINLESS STEEL BOLT ASSY, 3/8 X 2	0.6#
6.	12	C40046001	FENDER WASHER, 7/16 I.D. X 1 1/2 O.D.	0.6#
TOTAL WEIGHT				635.2#



NOTE:
THIS WAVEGUIDE BRIDGE ASSEMBLY IS NOT DESIGNED TO SUPPORT PERSONNEL OR EQUIPMENT.

UNLESS OTHERWISE SPECIFIED ALL DIMENSIONS INCLUDE FINISHES AND ARE IN INCHES		MATERIAL:	
TOLERANCES: FRACTIONS ± 1/16" ANGLES ± 1/2 DEG. DECIMALS ± .010"		TOLERANCES DO NOT APPLY TO RAW MATERIAL	
REV	DATE	DRW	CHK
4	1/14/09	MLC	MC
3	3/8/04	KLE	PSB
2	6/3/03	KLE	DLW
1	05/22/03	JKW	MLC
		DESCRIPTION	
		REVISED WEIGHT OF ITEM 1	
		UPDATED DRAWING	
		UPDATED DWG. & MOVED MAT'L. LIST	
		UPDATED PART NUMBERS.	

Sabre Industries
Towers and Poles

CONFIDENTIAL
This document and the information contained herein is the confidential trade secret property of Sabre Communications Corporation ("Sabre") and must not be reproduced, copied or used, in whole or in part, for any purpose without the prior written consent of Sabre.
© 2014 Sabre Communications Corporation. All rights reserved.

GRIP STRUT WAVEGUIDE BRIDGE WITH 18'-0" PIPE COLUMNS (24" WIDE X 10'-0") NO TRAPEZE			
DATE	10/30/00	SIZE	B
DRAWN BY	KLE	DRAWING NO.	C20135003
CHECKED BY	BCT	REV	4
SCALE	None	PAGE	1 OF 1

SECTION A-A