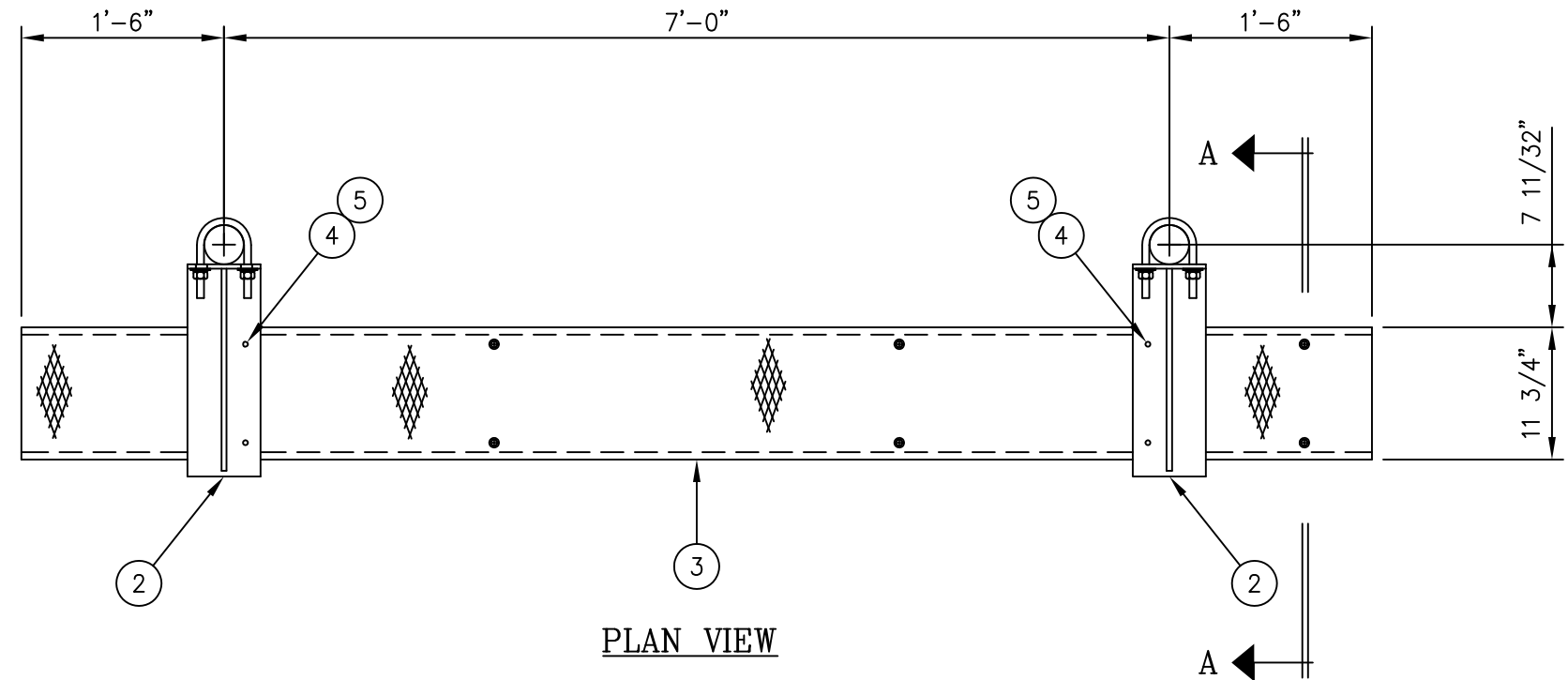
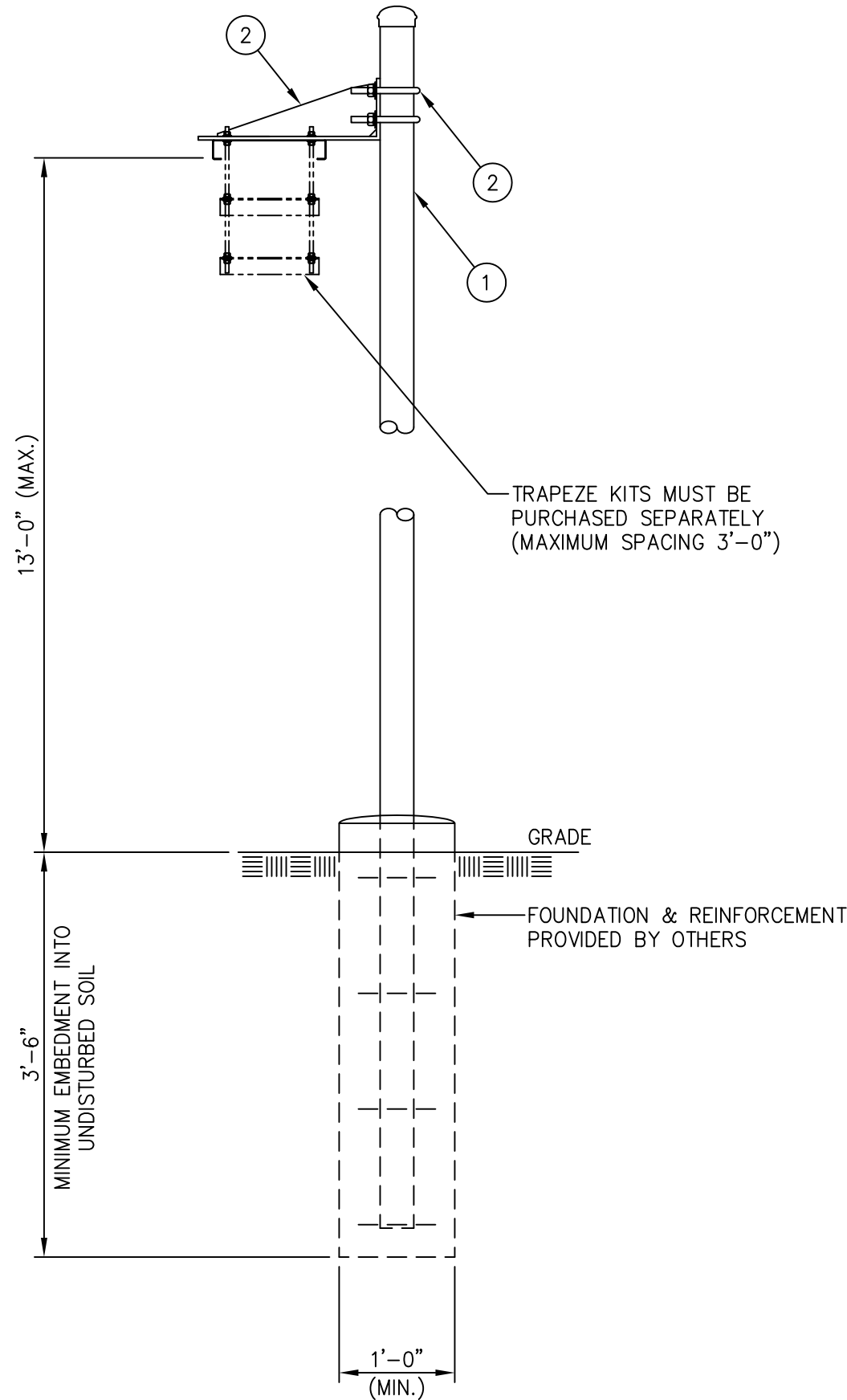




C20135001 GRIP STRUT WAVEGUIDE BRIDGE KIT

ITEM	QTY.	PART. NO.	DESCRIPTION	WEIGHT
1.	2	C20138001	PIPE, WAVEGUIDE BRIDGE POST W/PIPE CAP	231.0#
2.	2	C20140010	WAVEGUIDE BRIDGE SUPPORT ARM W/U-BOLTS	20.8#
3.	1	C20137001	GRIP STRUT WAVEGUIDE BRIDGE, 11 3/4" X 10'-0"	44.0#
4.	4	C40012017	STAINLESS STEEL BOLT ASSY, 3/8 X 2	0.4#
5.	8	C40046001	FENDER WASHER, 7/16 I.D. X 1 1/2 O.D.	0.4#
TOTAL WEIGHT				296.6#



NOTE:

THIS WAVEGUIDE BRIDGE ASSEMBLY IS NOT DESIGNED TO SUPPORT PERSONNEL OR EQUIPMENT.

UNLESS OTHERWISE SPECIFIED ALL DIMENSIONS INCLUDE FINISHES AND ARE IN INCHES		MATERIAL:	
TOLERANCES: FRACTIONS ± 1/16" ANGLES ± 1/2 DEG. DECIMALS ± .010"		TOLERANCES DO NOT APPLY TO RAW MATERIAL	
REV	DATE	DRW	CHK
4	1/14/09	MLC	MC
3	3/3/04	KLE	PSB
2	4/8/03	CE	KLE
1	10/5/01	KLE	DLW
		DESCRIPTION	
		REVISED WEIGHT OF ITEM 1	
		UPDATED DRAWING	
		MOVED MAT'L LIST & ADDED INFO	
		REMOVED J-BOLTS	

Sabre
Communications Corporation™

CONFIDENTIAL
This document and the information contained herein is the confidential trade secret property of Sabre Communications Corporation ("Sabre") and must not be reproduced, copied or used, in whole or in part, for any purpose without the prior written consent of Sabre.
© 2006 Sabre Communications Corporation. All rights reserved.

GRIP STRUT WAVEGUIDE BRIDGE WITH 18'-0" PIPE COLUMNS (11 3/4" WIDE X 10'-0") NO TRAPEZE			
DATE	10/30/00	SIZE	B
DRAWN BY	KLE	DRAWING NO.	C20135001
CHECKED BY	BCT	SCALE	None
		PAGE	1 OF 1
		REV	4

SECTION A-A